



The IMSL[®] Library for C#

Getting Started Guide – A Technical Guide by Rogue Wave
Software



Rogue Wave Software, Inc.
www.roguewave.com



The IMSL[®] Library for C#

Getting Started Guide

by Rogue Wave Software

© 2015 by Rogue Wave Software. All Rights Reserved

Printed in the United States of America

Trademark Information

The Rogue Wave Software name and logo, SourcePro, Stingray, HostAccess, IMSL and PV-WAVE are registered trademarks of Rogue Wave Software, Inc. or its subsidiaries in the US and other countries. JMSL, JWAVE, TS-WAVE, PyIMSL and Knowledge in Motion are trademarks of Rogue Wave Software, Inc. or its subsidiaries. All other company, product or brand names are the property of their respective owners.

IMPORTANT NOTICE: The information contained in this document is subject to change without notice. Rogue Wave Software, Inc. makes no warranty of any kind with regards to this material, including, but not limited to, the implied warranties of merchantability and fitness for a particular purpose. Rogue Wave Software, Inc. shall not be liable for errors contained herein or for incidental, consequential, or other indirect damages in connection with the furnishing, performance, or use of this material.

Table of Contents

| | |
|--------------------------------------|----|
| Installing IMSL Library for C# | 4 |
| License Key Setup | 11 |
| Test the Installation | 11 |

Installing IMSL Library for C#

1. Executing the install program

With an installation CD

Insert the CD, and the install program should start automatically. If it does not start, follow the instructions in Step 2 of "*With downloaded files*".

With downloaded files

- Step 1. Create a temporary folder and unzip the installation file in this folder. This folder will be used just for the installation and may be removed after the installation is complete.

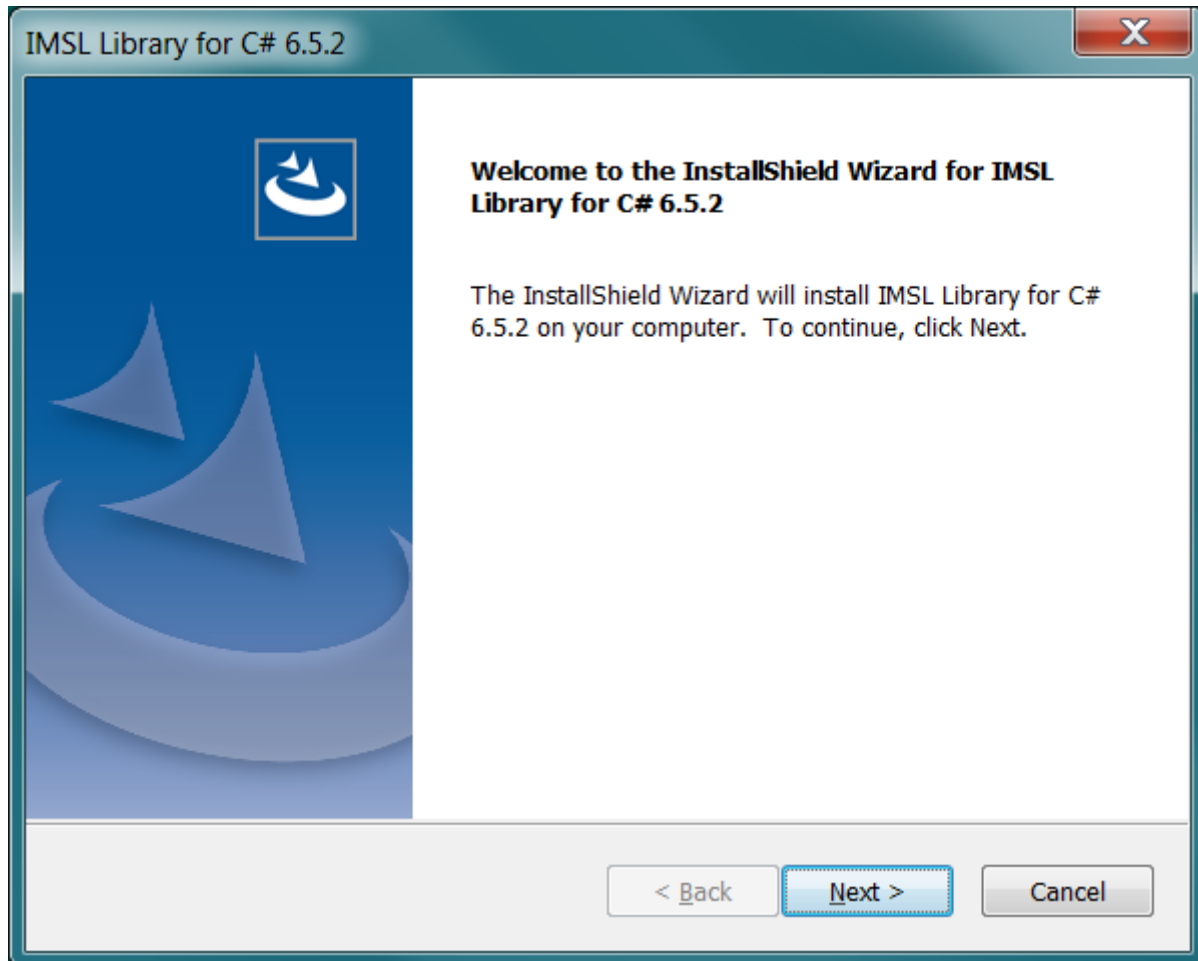
Notes:

This temporary folder is not the folder in which you install the IMSL Library for C# product. You will have an opportunity to choose a different destination folder during the installation.

- Step 2: Execute setup.exe located in the top level directory.

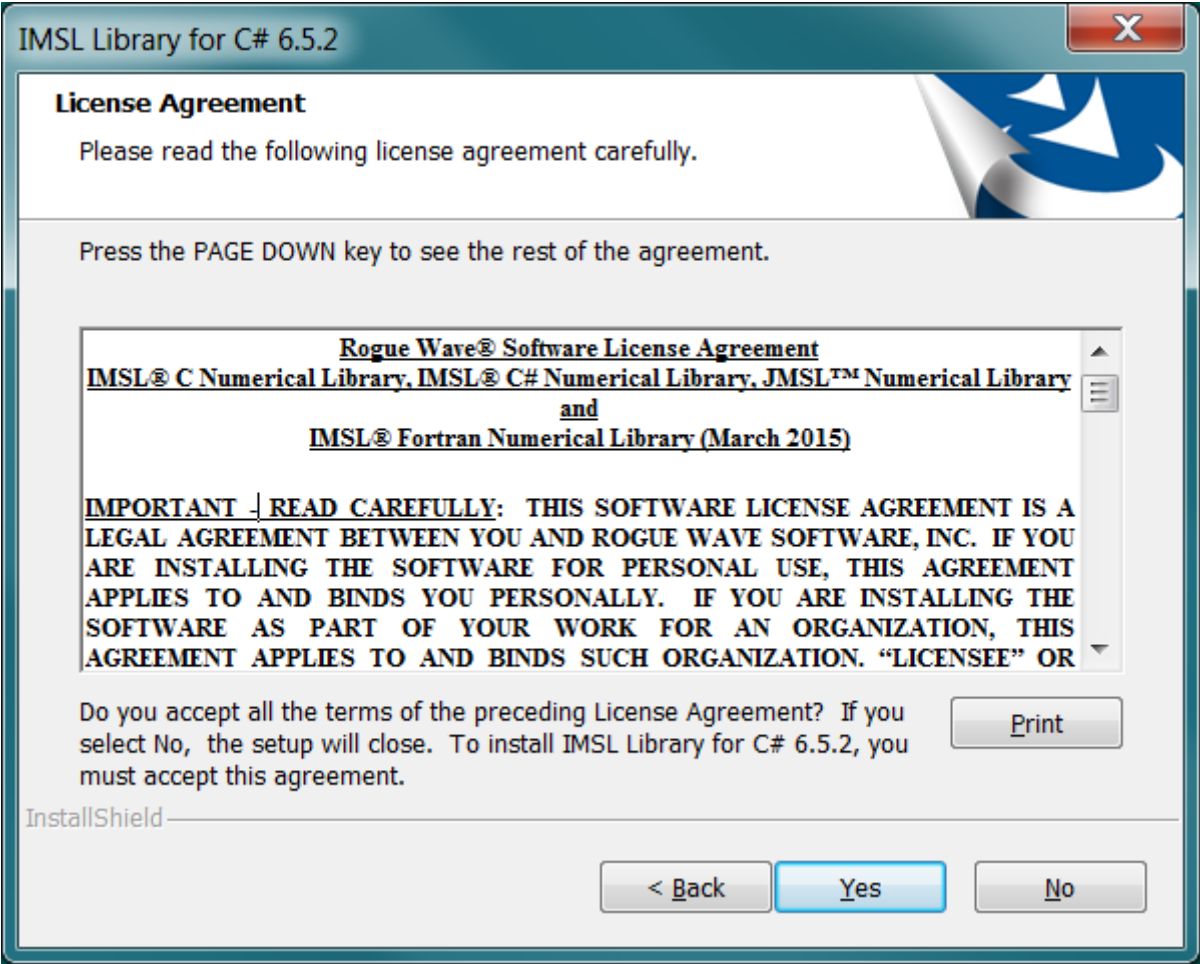
2. Welcome Page

The first window introduces the installation program for IMSL Library for C#. Click "Next >" to continue.



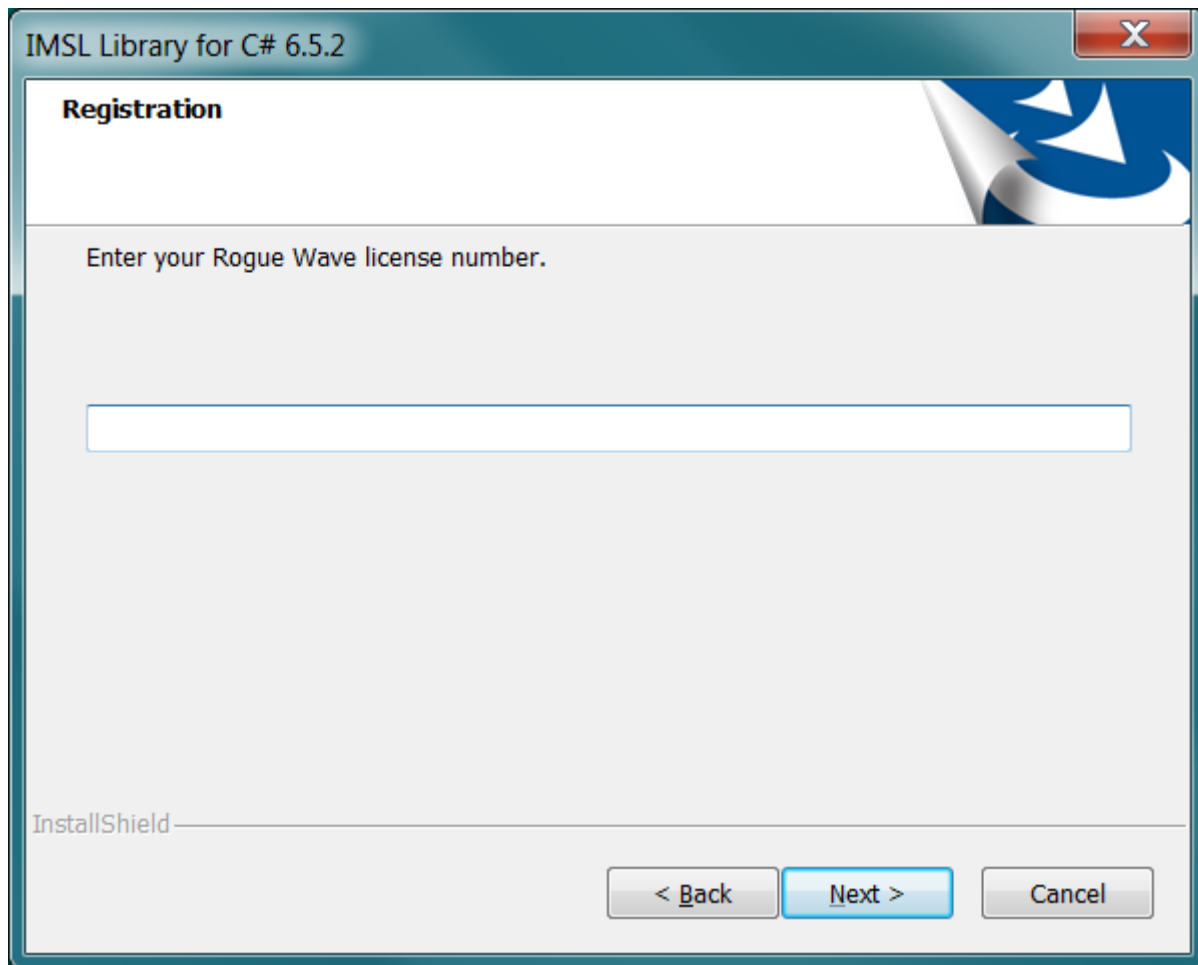
3. License Agreement

This screen presents the end user license agreement. When you have read the contents and agree, click "Yes" to continue the installation.



4. License Number

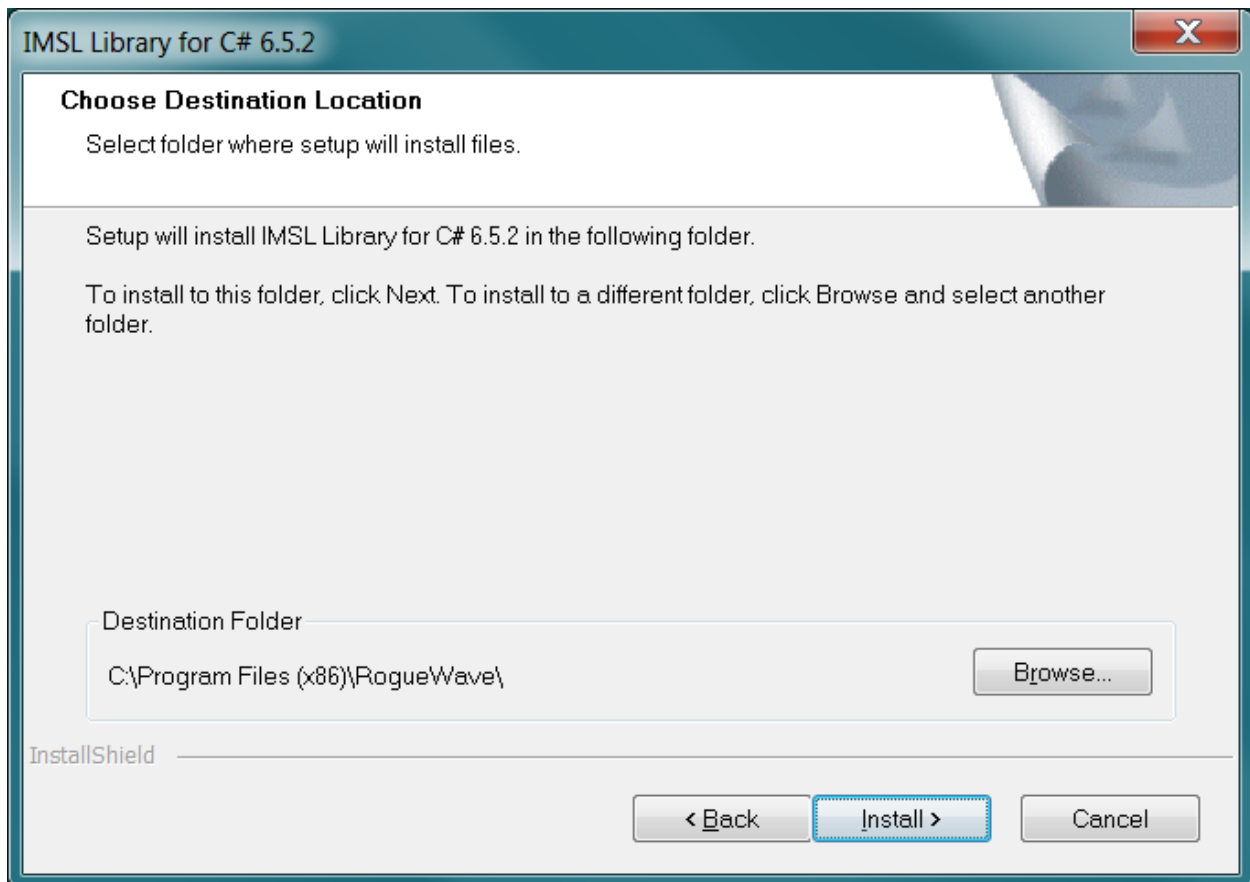
If you have a License Number, enter it at this point. If you do not yet have a license number or you are evaluating the product, enter 999999. Press "Next >" to continue.



The image shows a Windows-style dialog box titled "IMSL Library for C# 6.5.2". The dialog has a standard title bar with a close button (X) in the top right corner. The main content area is titled "Registration" and contains the instruction "Enter your Rogue Wave license number." Below this text is a single-line text input field. At the bottom of the dialog, there are three buttons: "< Back", "Next >" (which is highlighted in blue), and "Cancel". The "InstallShield" logo is visible in the bottom left corner of the dialog's content area.

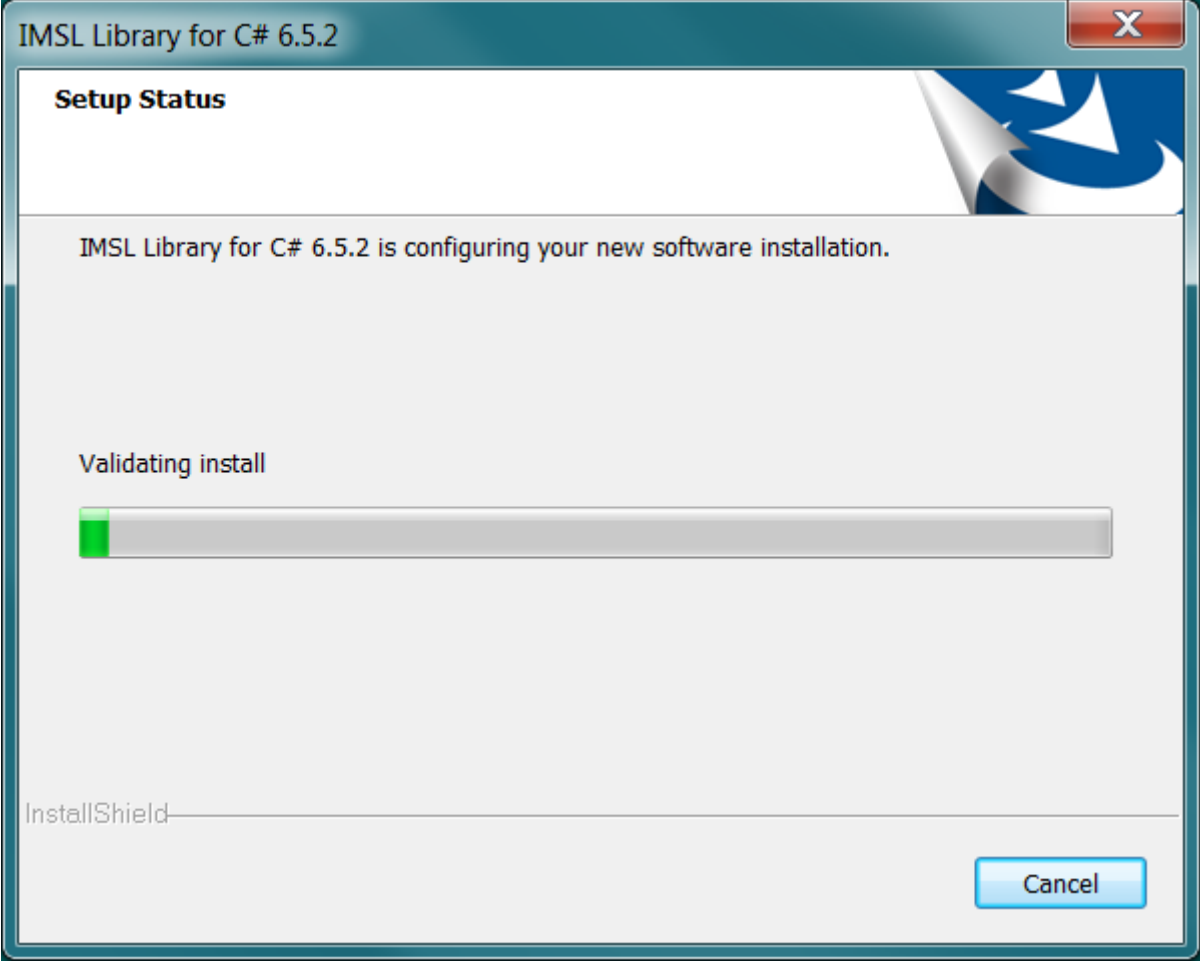
5. Install Directory

Set the directory where IMSL Library for C# will be installed. Use the "Browse..." button to select an alternative location. Press "Install >" when you are satisfied with the selection.



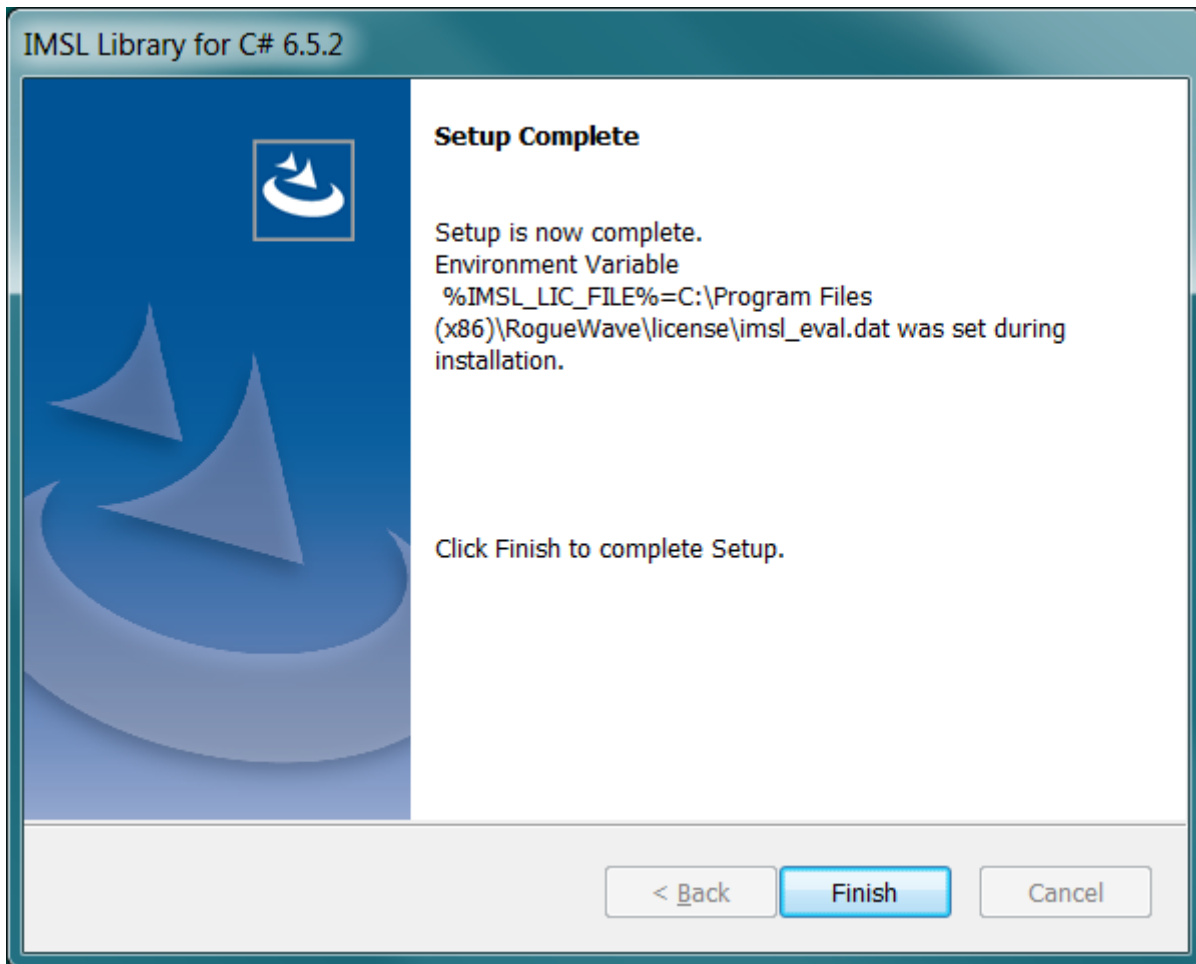
6. Installation Progress

You will be updated as the installation proceeds.



7. Installation Complete

After the license management step, the installation is complete. Click "Finish" to close the setup program.



License Key Setup

This step is necessary only if you have an evaluation copy of IMSL Library for C#.

Create the License File

Using a text editor, create the license file

[Program Files]\RogueWave\license\imsl_eval.dat. Then, cut and paste the contents of the file you received via e-mail from the Rogue Wave License Administrator.

Notes:

1. If due to local conventions or personal choice you do not wish to use the default license file name set the environment variable IMSL_LIC_FILE to point to the license file name and location of your choice. (<path>\<name>)
 2. Messages returned by the license manager are displayed in a popup box.
-

Test the Installation

Refer to *[Program Files]\RogueWave\imsl\imslcs652>manual\docs\Install.html* for information on running a sample program.